

The Kennebunk

**Leighton
Farm**
= SUBDIVISION =

Includes:
In-Law Apartment



Front



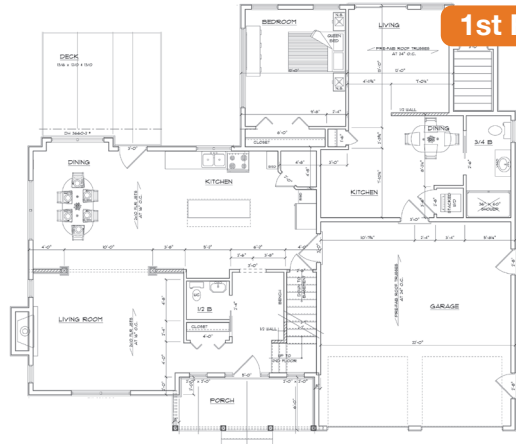
Plan Specifications

Bedrooms	4 Bedrooms
Baths	3.5 Baths
Square Feet	2466 sf - Two Stories
Heat System	IBC - Gas Fired Hi-Efficiency Boiler
Electric	100 Amp Circuit Breakers
Siding	0.42 Vinyl Siding
Roofing	30 yr Architectural Shingles
Interior Trim	5 1/4" Colonial Base with 3 1/4" Stafford Casing
Plumbing Fixtures	Kohler Devonshire
Windows	Kohltec Vinyl Clad Low E Double Pane

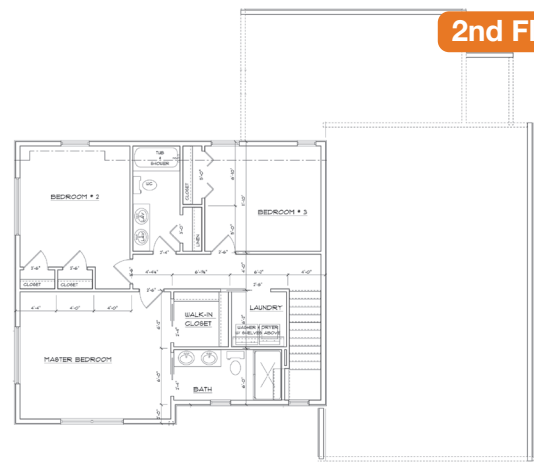
Standard Allowances

Flooring	\$10,000
Kitchen and Bath	\$10,000
Lighting	\$1,200
Paint	Sherwin William - 2 Color Choices Included

1st Floor



2nd Floor



Jeff Walker, Realtor

Office (207) 956-6015
 Mobile/Text (207) 749-2802
 Email jeffwalkersells@gmail.com

www.LeightonFarmHomes.com

WALKER
TEAM REAL ESTATE