

The Vinalhaven

**Leighton
Farm**
= SUBDIVISION =



Similar to be built

Front



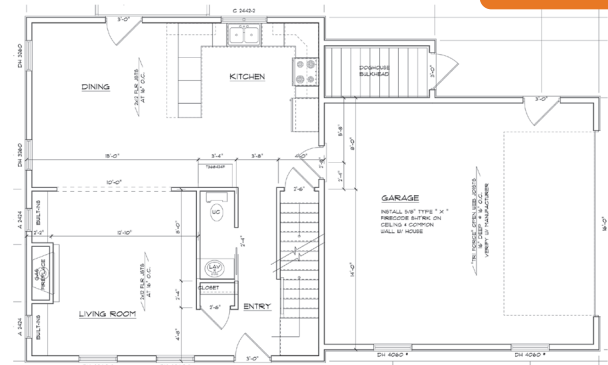
Plan Specifications

| | |
|--------------------------|--|
| Bedrooms | 4 Bedrooms |
| Baths | 2.5 Baths |
| Square Feet | 2140 sf - Two Stories |
| Heat System | IBC - Gas Fired Hi-Efficiency Boiler |
| Electric | 100 Amp Circuit Breakers |
| Siding | 0.42 Vinyl Siding |
| Roofing | 30 yr Architectural Shingles |
| Interior Trim | 5 1/4" Colonial Base with 3 1/4" Stafford Casing |
| Plumbing Fixtures | Kohler Devonshire |
| Windows | Kohltec Vinyl Clad Low E Double Pane |

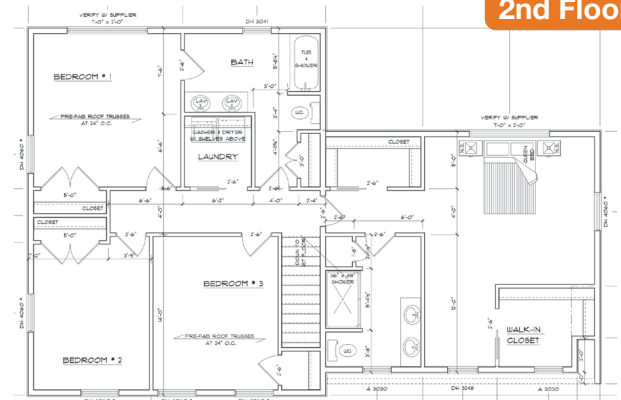
Standard Allowances

| | |
|-------------------------|--|
| Flooring | \$10,000 |
| Kitchen and Bath | \$10,000 |
| Lighting | \$1,200 |
| Paint | Sherwin William - 2 Color Choices Included |

1st Floor



2nd Floor



Jeff Walker, Realtor

Office (207) 956-6015
 Mobile/Text (207) 749-2802
 Email jeffwalkersells@gmail.com

www.LeightonFarmHomes.com

WALKER
TEAM REAL ESTATE